



# CelCulture<sup>®</sup> for IVF

Cradle for Optimal Embryo Incubation



Design Excellence - Superior Quality

Sleek, reliable and intuitive



# table of contents

---

- CelCulture® Parts and Features .....4
- Celculture® CO<sub>2</sub> Incubators for IVF .....6
- General Specifications .....7
- Ordering Information .....8
- Options & Accessories .....9
- Other Esco Embryo Incubators .....10
- Accessories & Ordering Information .....11



# CelCulture®

## CO<sub>2</sub> Incubators

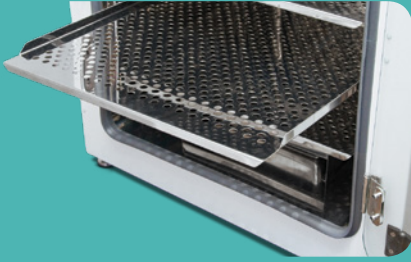
The CO<sub>2</sub> Incubator has a vital role in providing an optimal environment in embryo development during IVF and other ART procedures.

Sleek, reliable and intuitive, Esco CelCulture® CO<sub>2</sub> incubators are packed with outstanding features such as rapid parameter recovery, ISO Class 5 Cleanliness, ISOCIDE™ antimicrobial coating, standard Inner Door Kit that reduces contamination risk, and other accessories for specialized applications.



*\*Not applicable for 50 L model  
(including the top, back and bottom plenum)*

**CelCulture® — Stainless steel  
interior supported by a globally  
accepted technology**



### Shelving

- Perforated shelving to improve uniformity
- Anti-tip
- Stainless steel
- Built-in grip
- Dismantles without tools for easy cleaning



### Duct Work

- Directs air flow for rapid recovery and excellent uniformity
- Easily removed for cleaning



### Water Pan

- Precisely heated by base heater to provide high humidity
- Gentle airflow over water surface accelerates humidity recovery



## FEATURES:

### Smartsense™ Microcontroller Interface

Intuitive, fully-equipped control and monitoring system

### Quality Esco Construction

- Electrogalvanized steel with white oven-baked epoxy-polyester antimicrobial powder-coated finish.
- External surfaces are powder coated with Esco **ISOCIDE™** to eliminate 99.9% of surface bacteria within 24 hours of exposure.
- Ensures a healthier, safer and cleaner lab environment.

### ULPA Filter\*

- 99.999% efficient, superior to conventional HEPA filters
- Filters air continuously
- Chamber returns to ISO Class 5 cleanliness in 11 minutes upon door closing to prevent contamination.

### Sample Port

Allows direct measurement of chamber atmosphere such as temperature and CO<sub>2</sub> concentration

### Blower\*

Gentle airflow in chamber improves recovery and uniformity.

### Inner Door Kit

- Divides the incubator into different chambers
- Minimizes recovery times and contamination risk



# CelCulture<sup>®</sup> CO<sub>2</sub> Incubators for IVF



## Achieve optimal embryo growth

CelCulture<sup>®</sup> CO<sub>2</sub> Incubators now has a specific line of incubators for applications in IVF. These are packed with outstanding features to ensure stable environment for optimal embryo growth and faster parameter recovery every time the door is opened.

## Faster Temperature and CO<sub>2</sub>/O<sub>2</sub> Recovery Time

CelCulture<sup>®</sup> CO<sub>2</sub> Incubators for IVF are equipped with a sophisticated firmware and robust hardware components to facilitate faster recovery time for temperature, CO<sub>2</sub>, and O<sub>2</sub>. Faster recovery times render less stress to culture to ensure the integrity and full development of the embryos.

Fully redesigned sensor location to facilitate for a faster recovery of temperature inside the chamber. Infrared sensor monitors and controls CO<sub>2</sub> inside the chamber; while O<sub>2</sub> sensor maintains the suitable oxygen concentration for optimal incubation and growth of embryos.

## Maintaining Low Levels of Oxygen for Optimal Embryo Growth

The Suppressed O<sub>2</sub> Model of the CelCulture<sup>®</sup> is built to mimic the natural environment of developing embryos by maintaining the low levels of oxygen. The Zirconia O<sub>2</sub> sensor ensures accurate control and monitoring of hypoxic conditions inside the chamber.



## Inner Door Kit Feature

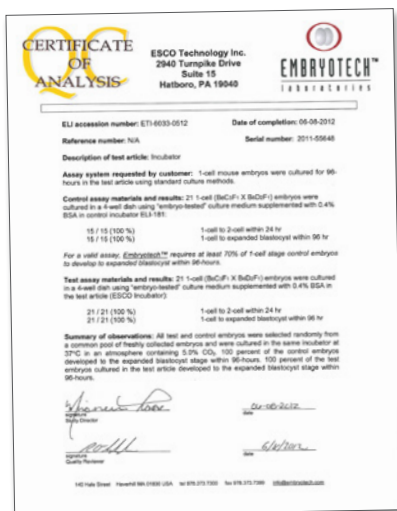
A standard feature that helps to hasten the recovery of parameters and prevent cross-contamination. The 50 L chamber is divided into two sections while the 170 L has 4 sections. The 240 L model can either have 4 or 6 sections. Each section has a dedicated door panel.



## Access Ports in Key Positions

Access ports to provide an easy route for calibration and validation of the chamber parameters

- two access ports for 50 L (one at the inner glass door and one at the rear of the incubator)
- three access ports for 170 L and 240 L (one at the inner glass door and two at the rear of the incubator)



## Maximum Protection Against Contaminants

- 90°C moist heat decontamination cycle
- Gas filters
- ISOCIDE<sup>™</sup> antimicrobial coating

## For IVF applications, Esco CelCulture<sup>®</sup> CO<sub>2</sub> incubators are certified embryo-safe.

Rigorously tested with the Mouse Embryo Assay (MEA), the CelCulture<sup>®</sup> remarkably has 100% embryo survival. The Mouse Embryo Assay (MEA) is the de facto standard test done to demonstrate that a procedure or an article of equipment is safe to use for manipulating human embryos (e.g., in vitro fertilization or IVF).

# General Specifications



CelCulture®

Specifications	CCL-050_--IVF	CCL-170_--IVF	CCL-240_--IVF
<b>Temperature</b>			
Temperature Control Method	Direct heat & air jacket using Microcontroller PI		
Temperature Range, °C	Ambient +7 to 60		
Temperature Fluctuation	± 0.2 °C		
Temperature Uniformity	<± 0.5 °C		
Temperature Accuracy	< ±0.1 °C		
<b>CO<sub>2</sub></b>			
CO <sub>2</sub> Control System	Microcontroller PI		
CO <sub>2</sub> Range, % CO <sub>2</sub>	0 - 20		
CO <sub>2</sub> Sensor	Infrared (IR) Sensor		
<b>O<sub>2</sub> SPECS (For Suppressed O<sub>2</sub> Model)</b>			
O <sub>2</sub> Control System	Microcontroller PI		
O <sub>2</sub> Range, % O <sub>2</sub>	1 - 20.7		
O <sub>2</sub> Sensor	Zirconia O <sub>2</sub> sensor		
<b>Humidity</b>			
Humidification Method	Humidity Pan (Natural Humidification)		
Humidity Range, % RH	Standard Unit: Up to 95%    Suppressed O <sub>2</sub> model: Up to 91%		
<b>Physical Construction</b>			
Number of Shelves	50L: 2 shelves	170L: 4 shelves	240L: 4 shelves
External Dimensions (W x D x H)	500 x 500 x 655 mm (19.7" x 19.7" x 25.8")	660 x 660 x 900 mm (26.0" x 26.0" x 35.4")	750 x 770 x 900 mm (29.5" x 30.3" x 35.4")
Gross Internal Dimensions (W x D x H)	345 x 375 x 388 mm (13.6" x 14.8" x 15.3")	505 x 535 x 633 mm (19.9" x 21.1" x 24.9")	595 x 640 x 633 mm (23.4" x 25.2" x 24.9")
Shipping Weight	70 kg (154.3 lbs)	120 kg (264.6 lbs)	155 kg (341.7 lbs)
Interior Volume	50 L (1.8 ft <sup>3</sup> )	170 L (6 ft <sup>3</sup> )	240 L (8.5 ft <sup>3</sup> )
<b>Contamination Control</b>			
Contamination Control Methods	1) Main body is electrogalvanized steel with ISOCIDE™ antimicrobial coating; 2) 90°C Moist Heat Decontamination Cycle (HPA Validated); 3) 0.2 micron inlet filter for gas inputs; 4) ULPA filter*		

\* Not available for 50 L

# Ordering Information



MODEL	ITEM CODE	DESCRIPTION
<b>IR Sensor Model with Stainless Steel Chamber</b>		
CCL-050B-8-IVF	2170257	Celculture® Incubator; 50L, IR sensor; CO <sub>2</sub> control, Moist Heat Decon, with Sealed Inner Door Kit for 50L (2 Glass Doors With Latches), Factory Installed, 230VAC, 50/60 Hz
CCL-170B-8-IVF	2170272	CelCulture® Incubator 170L IR Sensor; CO <sub>2</sub> Control ULPA, Moist Heat Decon, with Sealed Inner Door Kit for 170L (4 Glass Doors With Latches), Factory Installed, 230VAC 50/60Hz
CCL-240B-8-IVF	2170278	CelCulture® Incubator 240L IR Sensor CO <sub>2</sub> Control, ULPA, Moist Heat Decon, with Sealed Inner Door Kit for 240L (4/6 Glass Doors With Latches), Factory Installed, 230VAC 50/60Hz
CCL-050B-9-IVF	2170258	Celculture® Incubator; 50L, IR sensor; CO <sub>2</sub> control, Moist Heat Decon, with Sealed Inner Door Kit for 50L (2 Glass Doors With Latches), Factory Installed, 115VAC, 50/60 Hz
CCL-170B-9-IVF	2170273	CelCulture® Incubator 170L IR Sensor; CO <sub>2</sub> Control ULPA, Moist Heat Decon, with Sealed Inner Door Kit for 170L (4 Glass Doors With Latches), Factory Installed, 115VAC 50/60Hz
CCL-240B-9-IVF	2170279	CelCulture® Incubator 240 L, IR Sensor; CO <sub>2</sub> Control, ULPA, Moist Heat Decon, with Sealed Inner Door Kit for 240L (4/6 Glass Doors With Latches), 115VAC, 50/60 Hz
<b>Supressed O<sub>2</sub> Model with Stainless Steel Chamber</b>		
CCL-050T-8-IVF	2170260	Celculture® Incubator; 50L, IR sensor; CO <sub>2</sub> & O <sub>2</sub> control, Moist Heat Decon, with Sealed Inner Door Kit for 50L (2 Glass Doors With Latches), Factory Installed, 230VAC, 50/60 Hz
CCL-170T-8-IVF	2170275	CelCulture® Incubator 170L IR Sensor; CO <sub>2</sub> & O <sub>2</sub> Control ULPA, Moist Heat Decon, with Sealed Inner Door Kit for 170L (4 Glass Doors With Latches), Factory Installed, 230VAC 50/60Hz
CCL-240T-8-IVF	2170281	Celculture® Incubator; 240L, IR sensor; CO <sub>2</sub> & O <sub>2</sub> control ULPA, with Sealed Inner Door Kit for 240L (4/6 Glass Doors With Latches), Factory Installed, 230VAC 50/60Hz
CCL-050T-9-IVF	2170261	Celculture® Incubator; 50L, IR sensor; CO <sub>2</sub> & O <sub>2</sub> control, Moist Heat Decon, with Sealed Inner Door Kit for 50L (2 Glass Doors With Latches), Factory Installed, 115VAC, 50/60 Hz
CCL-170T-9-IVF	2170276	CelCulture® Incubator 170L IR Sensor; CO <sub>2</sub> & O <sub>2</sub> Control ULPA, Moist Heat Decon, with Sealed Inner Door Kit for 170L (4 Glass Doors With Latches), Factory Installed, 115VAC 50/60Hz
CCL-240T-9-IVF	2170282	Celculture® Incubator; 240L, IR sensor; CO <sub>2</sub> & o <sub>2</sub> control ULPA, with Sealed Inner Door Kit for 240L (4/6 Glass Doors With Latches), Factory Installed, 115VAC 50/60Hz



# Options & Accessories



## Electronic Gas Analyzer

The electronic analyzer allows the measurement of CO<sub>2</sub> concentration, O<sub>2</sub> concentration, relative humidity and temperature (temperature probe already included).



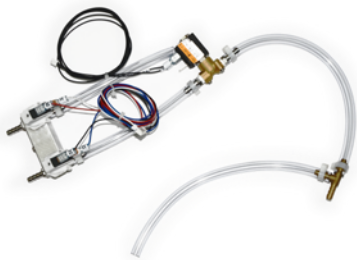
## SAFE Sens Kit

For continuous pH monitoring.



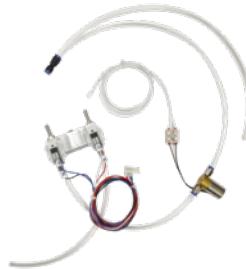
## Humidity Display

For monitoring of the Relative Humidity inside the chamber. Works from -70°C to 180°C



## CO<sub>2</sub> Back up

This option allows two tanks of CO<sub>2</sub> to be connected to the incubator. It will automatically switch from the primary tank to the secondary tank when low gas pressure is detected on the primary tank.



## N<sub>2</sub> Back up

This option allows two tanks of N<sub>2</sub> to be connected to the incubator. It will automatically switch from the primary tank to the secondary tank when low gas pressure is detected on the primary tank.



## Roller Base

With casters for mobility of your incubators.



## Floor Stand with Adjustable Feet

Nominal range of 180 mm to 250 mm (7.1" to 9.8")



## Floor Stand with Casters

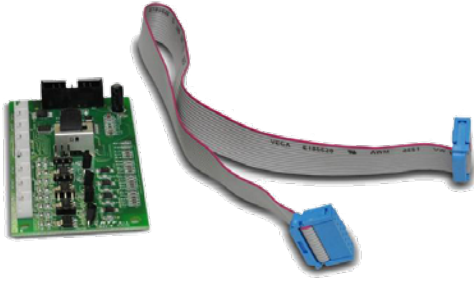
Support stand raises the incubator to a height of 700 mm (27.6") above the floor



## 2-Stage gas regulator for CO<sub>2</sub>/N<sub>2</sub>

Used to reduce the pressure from the tank to the incubator.

## Options & Accessories



### Analog Output

Used for connecting the incubator to an output analog signals representing the temperature, CO<sub>2</sub> and O<sub>2</sub> gas concentration and relative humidity.



### Additional Stainless Steel Shelf (for SS Chamber)

Maximize your incubator space by adding more shelves. Can add 1 extra shelf for 50 L model, 3 more shelves for 170 L and 240 L models.



### Chart Recorder

Easy-to-read graph of data vs. time



### Voyager Software Kit

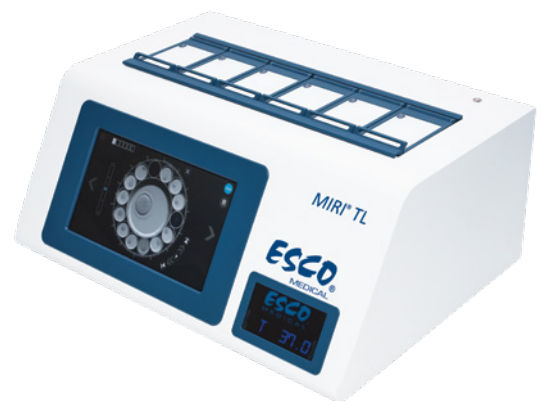
PC-based software for remote monitoring, datalogging and programming.

## Other Esco Embryo Incubators



### MIRI® Multi-room Benchtop Incubator

The overall design provides embryo culture in a minimum-stress environment. The 6-chamber format prevents cross-contamination while HEPA+VOC filtration and UV light clean the airflow of the incubator. The chambers are also independent of each other; hence, any disruption such as temperature drop when opening the lid will have no impact on the rest of the system.



### MIRI® TL Incubator

Time-Lapse Imaging has given birth to a new concept in the IVF laboratory, termed morphokinetics. It allows embryologists to see significant morphological events that might not be seen through conventional scoring. With MIRI® TL, you can watch the embryos grow and develop throughout the entire culture process. There's no need to take your dishes out for scoring.

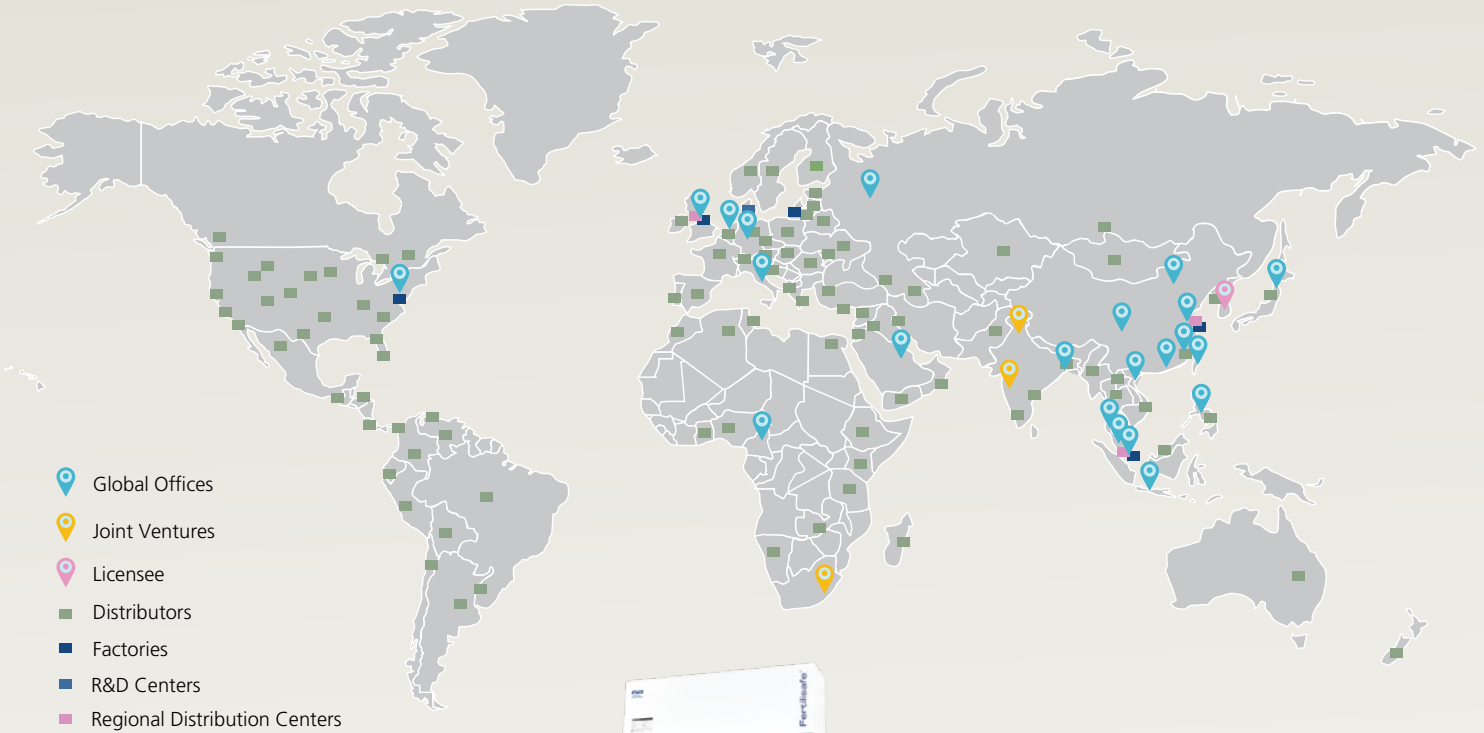
# Accessories & Ordering Information



ACCESSORIES	ITEM CODE	DESCRIPTION
COA-1001	5170470	Humidity Display, Factory-installed
COA-1001-F	5170471	Humidity Display, Field-installed Kit
COA-1002	5170472	CO <sub>2</sub> Backup (Tank Switcher), Factory-installed
COA-1002-F	5170473	CO <sub>2</sub> Backup (Tank Switcher), Field-installed
COA-1004	5170474	Reversed Door Swing, Factory-installed
COA-1005	5170475	Analog Outputs, Factory-installed
COA-1005-F	5170476	Analog Outputs, Field-installed
COA-1007	5170490	N <sub>2</sub> Back-up (Tank Switcher), Factory-installed
COA-1007-F	5170491	N <sub>2</sub> Back-up (Tank Switcher), Field-installed
COA-2018-F	5170419	Roller Base (50 L)
COA-2001-F	5170478	Roller Base (170 L)
COA-2019-F	5170420	Roller Base (240 L)
COA-2020-F	5170421	Floor Stand 200 mm (8.0") with Adjustable Feet (50 L)
COA-2002-F	5170479	Floor Stand 200 mm (8.0") with Adjustable Feet (170 L)
COA-2021-F	5170422	Floor Stand 200 mm (8.0") with Adjustable Feet (240 L)
COA-2022-F	5170423	Floor Stand 700 mm (27.6") with Casters (50 L)
COA-2003-F	5170480	Floor Stand 700 mm (27.6") with Casters (170 L)
COA-2023-F	5170424	Floor Stand 700 mm (27.6") with Casters (240 L)
COA-2004-F	5170489	2-units Floor Stand Stacking Kit (For 170L)
COA-2005-F	5170481	2-Stage Gas Regulator for CO <sub>2</sub> / N <sub>2</sub> Choose one of the connectors below: 1080588 - CGA 320 Connector (US standard) 1080589 - BP-BS34-#8-NT4 Connector (British standard) 1080590 - G5/8-RH Connector (China standard)

ACCESSORIES	ITEM CODE	DESCRIPTION
COA-2024-F	5170425	Extra Shelf (50 L, stainless steel)
COA-2007-F	5170327	Extra Shelf (170 L, stainless steel)
COA-2025-F	5170426	Extra Shelf (240 L, stainless steel)
COA-2008-F	5170483	Stacking Kit (one set included with every unit purchased)
COA-2010-F	5170329	Electronic CO <sub>2</sub> Analyzer, For CO <sub>2</sub> / Temp Measurement (with Temperature Probe)
COA-2016-F	5170397	Electronic CO <sub>2</sub> + O <sub>2</sub> Analyzer, For CO <sub>2</sub> / O <sub>2</sub> / Temperature Measurement
COA-2017-F	5170398	Electronic CO <sub>2</sub> + O <sub>2</sub> + RH Analyzer, For CO <sub>2</sub> / O <sub>2</sub> / RH / Temperature Measurement
COA-2011-F	2170020	IQ / OQ Documentation
COA-2012-F	2170021	6" Chart Recorder; Temp, 115/230 VAC, 50/60 Hz
COA-2013-F	2170022	8" Chart Recorder; Temp / Temp, 115/230 VAC, 50/60 Hz
COA-2014-F	2170023	6" Chart Recorder; Temp/RH, 115/230 VAC, 50/60 Hz
COA-2015-F	5170487	Inner Door Shelving Kit for 170 L (4 sets with total 12 mini-shelves for one incubator)
Voyager®	5250001	Voyager® Software Kit
MRI-GA	1320045	MIRI® GA CO <sub>2</sub> / O <sub>2</sub> / Temp Validation Unit, 115-230VAC, 50/60 Hz
TBA	1250109	Safesens TrackStation for CO <sub>2</sub> incubator (to be sold with 1250110). Can connect up to 8 incubators.
TBA	1250110	Safesens TrackPod for CO <sub>2</sub> incubator (to be sold with 1250109)
TBA	1081277	SafeSens SV2 Sensor; Pack of 10 pieces (shelf-life 12 months)
TBA	1081278	SafeSens QC2 Alignment Tool

# GLOBAL NETWORK

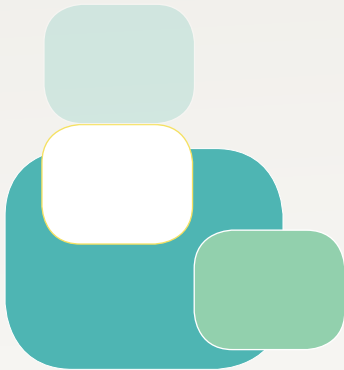


- Esco Medical Products:**
- Anti-Vibration Table (AVT)
  - CelCulture CO<sub>2</sub> Incubator
  - Culture and Fertilization Dishes
  - Fertilisafe<sup>®</sup> IVF Workstation
  - MIRI<sup>®</sup> Benchtop Multi-room Incubators
  - Mini MIRI<sup>®</sup> Humidified Benchtop Incubator
  - MIRI<sup>®</sup> TL6 Time Lapse Embryo Incubator
  - MIRI<sup>®</sup> GA (Gas and Temperature Validation Unit)
  - MIRI<sup>®</sup> GA Mini (Gas Analyzer)
  - Semi Closed Environment (IVF/ICSI)

*Infertility is viewed as a problem that has social, psychological, and economic impact on the afflicted individuals and couples. It is a global concern that knows no race or creed. It has been estimated that 1 in 6 couples struggle with infertility at least once in their lifetime.*

*Esco Medical is one of the divisions of the Esco Group of Companies, apart from Life Sciences and Healthcare. Esco is now providing innovative technological solutions for fertility clinics and laboratories. Esco Medical is positioned to become a leading manufacturer and innovator of high-quality equipment such as long-term embryo incubators, ART workstations, anti vibration table, time-lapse incubator and etc.*

*Esco Medical products are designed with the Silent Embryo Hypothesis as a guiding principle. The Silent Embryo Hypothesis states that the less disturbed an embryo can remain, the better its developmental potential will be. Most of our products are designed in Denmark and made in the EU. The primary focus of this division is to increase pregnancy success rates and patient satisfaction.*



21 Changi South Street 1 • Singapore 486 777  
 Tel +65 6542 0833 • Fax +65 6542 6920  
 medical@escoglobal.com • www.medical.escoglobal.com

**Esco Global Offices:** Bangladesh | Cameroon | China | Denmark | Germany | Hong Kong | India | Indonesia | Italy | Japan | Lithuania | Malaysia | Myanmar | Philippines | Russia | Singapore | South Africa | South Korea | Taiwan | Thailand | UAE | UK | USA | Vietnam

8419296, CelCulture, Fertilisafe, MIRI, and Semi Closed Environment are trademarks of Esco Medical Inc. Esco reserves the right to alter its products and specifications without notice. All trademarks and logos in this material are the property of Esco and the respective companies.